



PACIFIC RIDGE'S KLIYUL COPPER GOLD PROJECT

January 14, 2025

Forward looking statements

This presentation includes certain statements that may be deemed “forward-looking statements”. All statements in this presentation, other than statements of historical facts, that address exploration drilling, exploitation activities and events or developments that Pacific Ridge Exploration Ltd. expects to occur, are forward-looking statements. Such statements may be identified in this presentation by the use of words such as ‘plans”, “will”, “expects” and “may” as well as the use of the future or conditional tense. Although Pacific Ridge Exploration Ltd. believes the expectations expressed in such forward-looking statements are based on reasonable assumptions, such statements are not guarantees of future performance and actual results or developments may differ materially from those in the forward-looking statements. Factors that could cause actual results to differ materially from those in forward looking statements include market prices, exploitation and exploration successes, and continued availability of capital and financing and general economic, market or business conditions. Investors are cautioned that any such statements are not guarantees of future performance and actual results or developments may differ materially from those projected in the forward-looking statements.

Pacific Ridge’s disclosure of a technical or scientific nature has been reviewed by Danette Schwab, P.Geo., Pacific Ridge’s VP Exploration, the Qualified Person under the definition of National Instrument 43-101.

Introduction

Pacific Ridge is **one of North America's leading copper-gold exploration companies** and maintains excellent relationships with local First Nations.

The Company **owns or controls five copper-gold porphyry projects** in B.C.

The Kliyul copper-gold project, located in the prolific Quesnel Terrane in northcentral B.C., is Pacific Ridge's flagship project:

- Pacific Ridge **has spent more than CAD\$14.0M** on exploration at Kliyul since optioning it from Centerra Gold in 2020 and issued 17.0M shares (valued at CAD\$4.0M) to acquire 100% ownership in 2023.
- Pacific Ridge has significantly expanded the mineralized extents of the Kliyul Main Zone ("KMZ") since 2021, and it **remains open in every direction**.
- 523.5 line-km of ZTEM in 2024, results pending, to **support KMZ targeting at depth and evaluate property-scale potential**.
- Claims in good standing until 2034 – **no expenditures required until 2034**.



Quesnel and Stikine Terrane

Northern Hogem area projects

Kliyul 100% owned

- Pacific Ridge's flagship project.
- Early stage: Drilling, ZTEM, IP, mapping, and sampling.

RDP 100% owned

- Early stage: Drilling, IP, mapping, and sampling.
- Optioned to Antofagasta from 2022-2024.

Southern Hogem area projects

Chuchi option to acquire 75% from Centerra

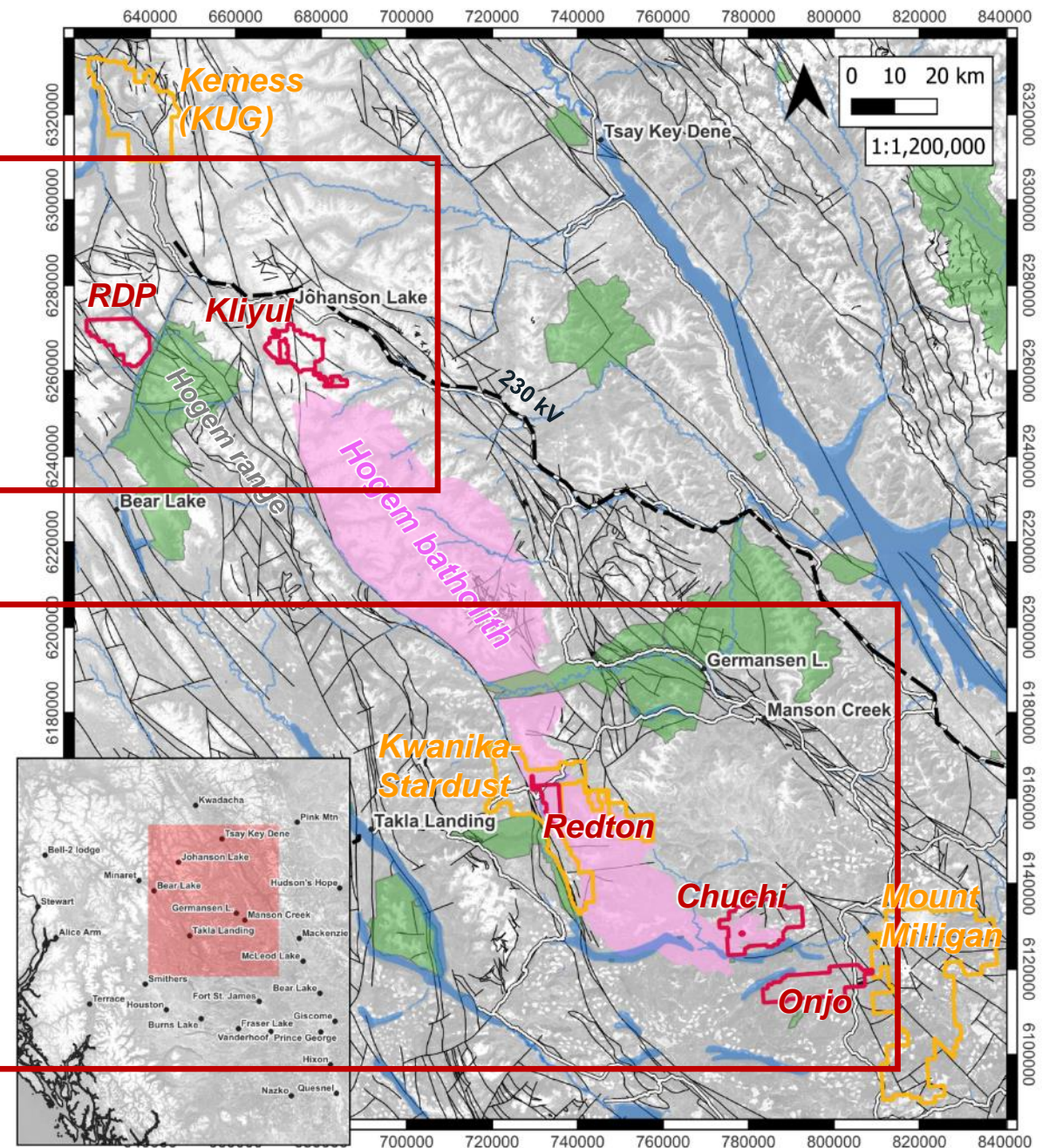
- Early stage: Drilling, ZTEM, IP, mapping, and sampling.
- Inaugural drill program in 2024 (2,716m).

Onjo 100% owned

- Grassroots: ZTEM, IP, mapping, and sampling.

Redton 100% owned

- Grassroots: Drilling (one hole in 2020), IP, mapping, and sampling.



Kliyul Project History

1940's: Gold discovery

2006: First deep drilling by Geoinformatics (751 m)

2020: PEX options Kliyul from Centerra

2022: PEX drills 12 holes (7,015m)

2023: PEX drills 19 holes (10,284m)

1971-1995
24 shallow drill holes by several operators

2015: Teck drills four holes (1,908m)

2021: PEX drills three holes (1,544m)

2023: PEX acquires Kliyul 100%

Kliyul Overview

- Over 92 square kilometres in size, **Kliyul is 100% owned by Pacific Ridge.**
- **Located in a prolific mining belt** close to existing infrastructure.
- **Similar geological environment and comparable grades** to other B.C. porphyry deposits/mines.
- Pacific Ridge **has drilled ~19,000 m at Kliyul since 2021** and has significantly grown the mineralized extents of KMZ.
- Data suggests that there is **excellent potential for KMZ to continue growing.**
- Pacific Ridge completed 523.5 line-km of ZTEM in 2024 with an objective of vectoring **higher-grade porphyry core in KMZ North** and to delineate property-scale targets.

Width	CuEq*	AuEq**	Width	CuEq*	AuEq**
301.4m	0.49%	0.73g/t	245.0m	0.55%	0.81g/t
KLI-06-30 ¹	Geoinformatics 2006		KLI-15-34 ¹	Teck Resources 2015	
Width	CuEq*	AuEq**	Width	CuEq*	AuEq**
291.7m	0.79%	1.18g/t	316.7m	0.79%	1.17g/t
KLI-21-036 ²	Pacific Ridge 2021		KLI-21-037 ³	Pacific Ridge 2021	
Width	CuEq*	AuEq**	Width	CuEq*	AuEq**
278.0m	0.63%	0.94g/t	328.0m	0.64%	0.95g/t
KLI-22-041 ⁴	Pacific Ridge 2022		KLI-22-050 ⁵	Pacific Ridge 2022	
Width	CuEq*	AuEq**	Width	CuEq*	AuEq**
305.5m	0.59%	0.87g/t	455.8m	0.43%	0.63g/t
KLI-23-054 ⁶	Pacific Ridge 2023		KLI-23-068 ⁷	Pacific Ridge 2023	

*CuEq = ((Cu%) x \$Cu x 22.0462) + (Au(g/t) x AuR/CuR x \$Au x 0.032151) + (Ag(g/t) x AgR/CuR x \$Ag x 0.032151) / (\$Cu x 22.0462).

**AuEq = ((Au(g/t) x \$Au x 0.032151) + ((Cu%) x CuR/AuR x \$Cu x 22.0462) + (Ag(g/t) x AgR/CuR x \$Ag x 0.032151)) / (\$Au x 0.032151).

Commodity prices: \$Cu = US\$3.25/lb, \$Au = US\$1,800/oz., and Ag = US\$20.00/oz.

There has been no metallurgical testing on Kliyul mineralization. The Company estimates copper recoveries (CuR) of 84%, gold recoveries (AuR) of 70%, and silver recoveries (AgR) of 65% based on the average recoveries from Kemess Underground, Mount Milligan, and Red Chris.)

Factors: 22.0462 = Cu% to lbs per tonne, 0.032151 = Au g/t to troy oz per tonne, and 0.032151 = Ag g/t to troy oz per tonne.

1. See news release dated January 17, 2020

2. See news release dated December 1, 2021

3. See news release dated January 31, 2022

4. See news release dated November 16, 2022

5. See news release dated January 18, 2023

6. See news release dated August 23, 2023

7. See news release dated January 9, 2022

Kliyul Comparables

How does the porphyry mineralization in holes KLI-06-30, KLI-15-34, KLI-21-036, KLI-21-037, KLI-22-041, KLI-22-050, KLI-23-054, and KLI-23-068 compare to the porphyry mineralization at Mount Milligan, Red Chris, KUG, and Saddle North?

Deposit/Mine	MT	Cu%	Au g/t	Ag g/t	Category
Mount Milligan	246	0.18	0.37	N/A	Proven & Probable ¹
Red Chris	240	0.36	0.30	N/A	Indicated (open pit and 70% attributable share) ²
KUG	107	0.27	0.50	N/A	Proven and Probable ³
Saddle North	298	0.28	0.36	0.80	Indicated ⁴

Kliyul		Cu%	Au g/t	Ag g/t	Metres
Hole KLI-23-068		0.17	0.37	0.93	455.8 ⁵
Hole KLI-23-054		0.23	0.51	1.22	305.5 ⁶
Hole KLI-22-050		0.25	0.57	1.25	328.0 ⁷
Hole KLI-22-041		0.14	0.72	0.95	278.0 ⁸
Hole KLI-21-037		0.30	0.70	2.17	316.7 ⁹
Hole KLI-21-036		0.28	0.74	2.04	291.7 ¹⁰
Hole KLI-15-34		0.18	0.53	1.35	245.0 ¹¹
Hole KLI-06-30		0.19	0.44	1.49	301.4 ¹¹

1. <https://www.globenewswire.com/en/news-release/2022/10/04/2527569/0/en/Centerra-Gold-Announces-Highlights-of-New-Life-of-Mine-Plan-for-the-Mount-Milligan-Mine-Including-an-Extension-of-Mine-Life-to-2033.html>
2. https://www.newcrest.com/sites/default/files/2022-11/221004_Annual%20Report%202022_0.pdf
3. <https://www.centerragold.com/operations/reserves-resources/>
4. <https://www.globenewswire.com/en/news-release/2020/07/06/2058211/0/en/GT-Gold-announces-maiden-Mineral-Resource-Estimate-for-Saddle-North-project-Tatogga-property-in-British-Columbia-Canada.html>
5. See news release dated January 9, 2024
6. See news release dated August 23, 2023
7. See news release dated January 18, 2023
8. See news release dated November 16, 2022
9. See news release dated January 31, 2022
10. See news release dated December 1, 2021
11. See news release dated January 17, 2020

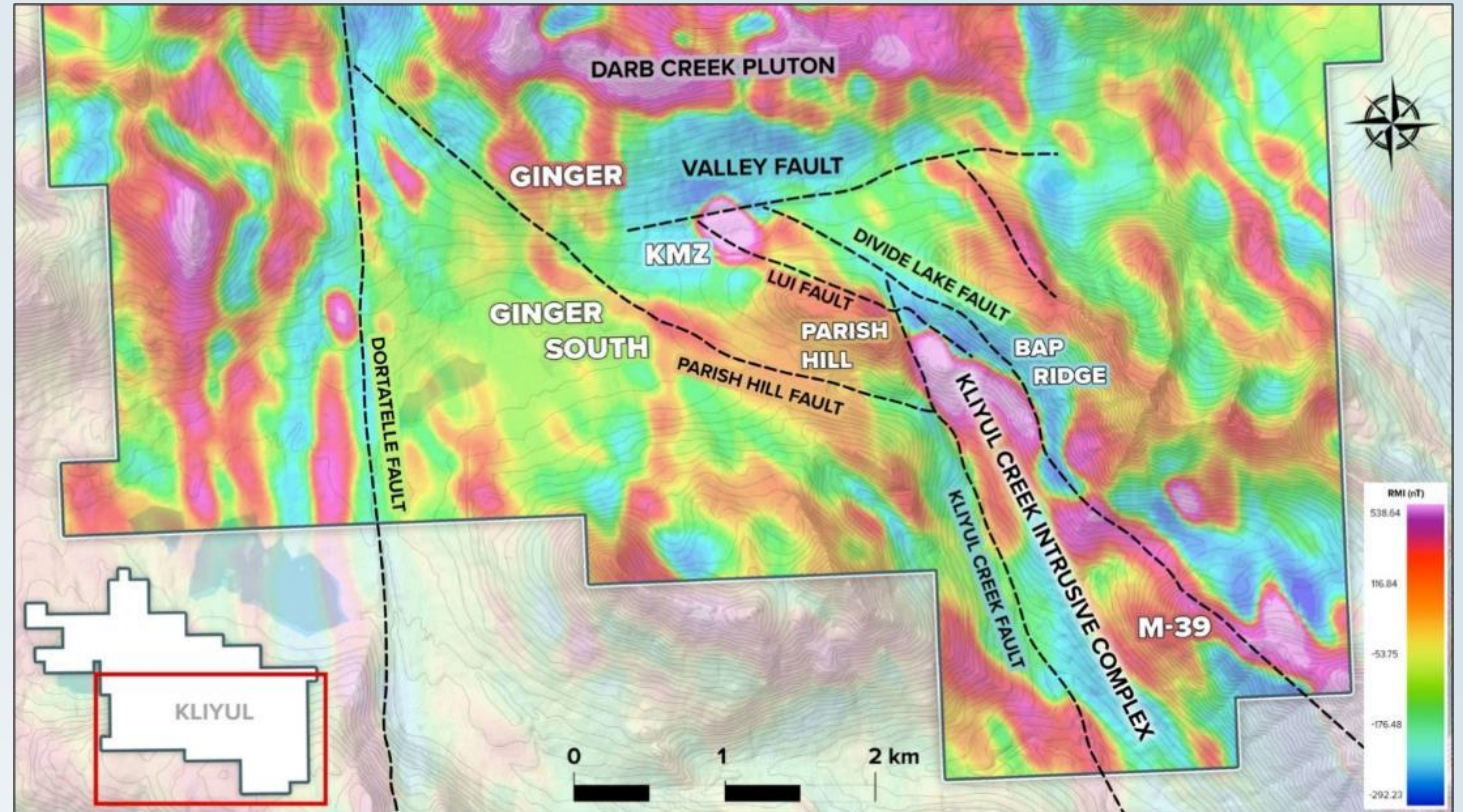
Target Areas

Over 6km strike length of favourable geology, geochemistry, alteration and geophysics

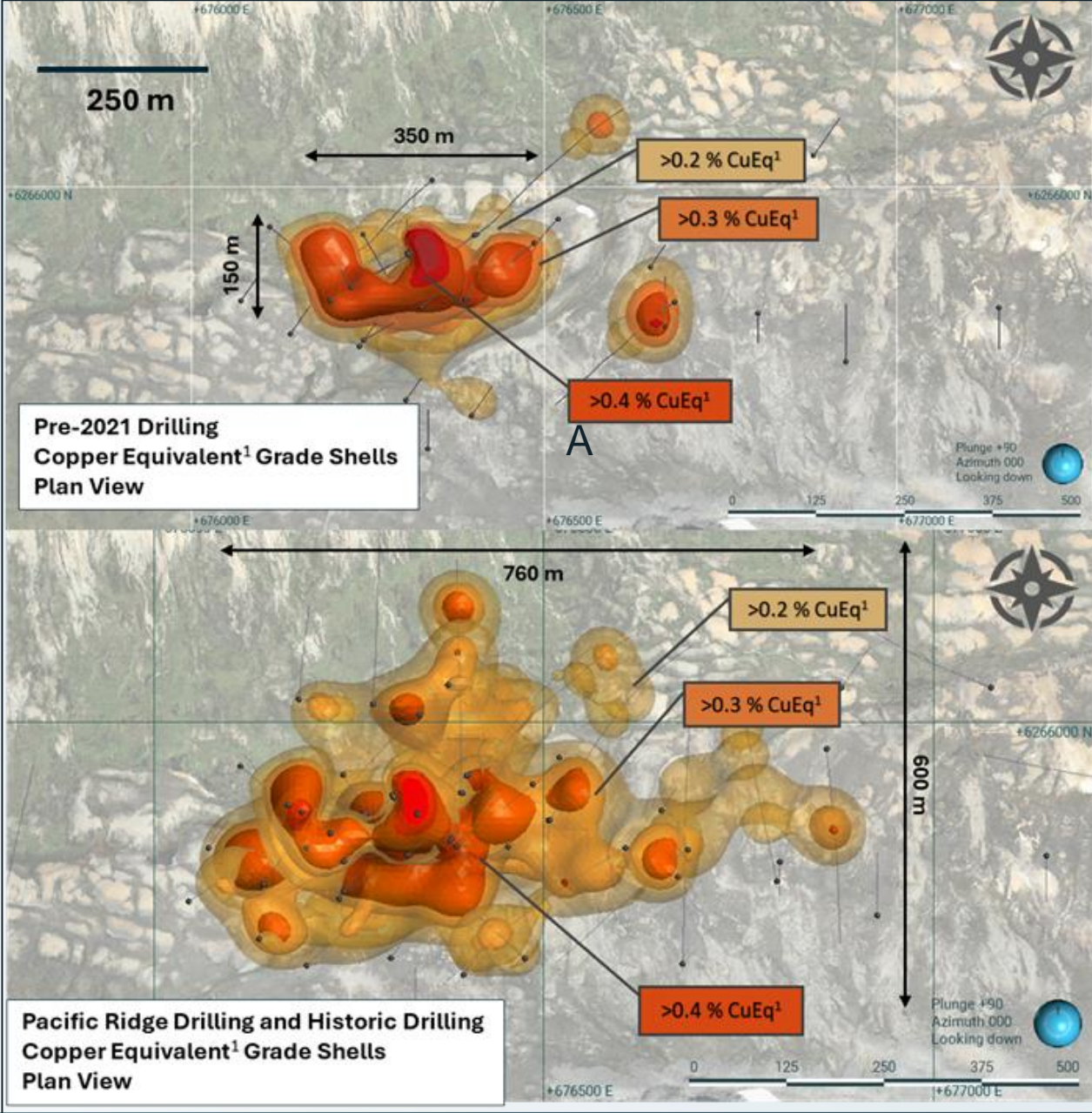
KMZ has been the focus of historic and Pacific Ridge's drilling.

The Company has grown the mineralized extents to ~760 m E-W x ~600 m N-S x ~650 m vertical depth.

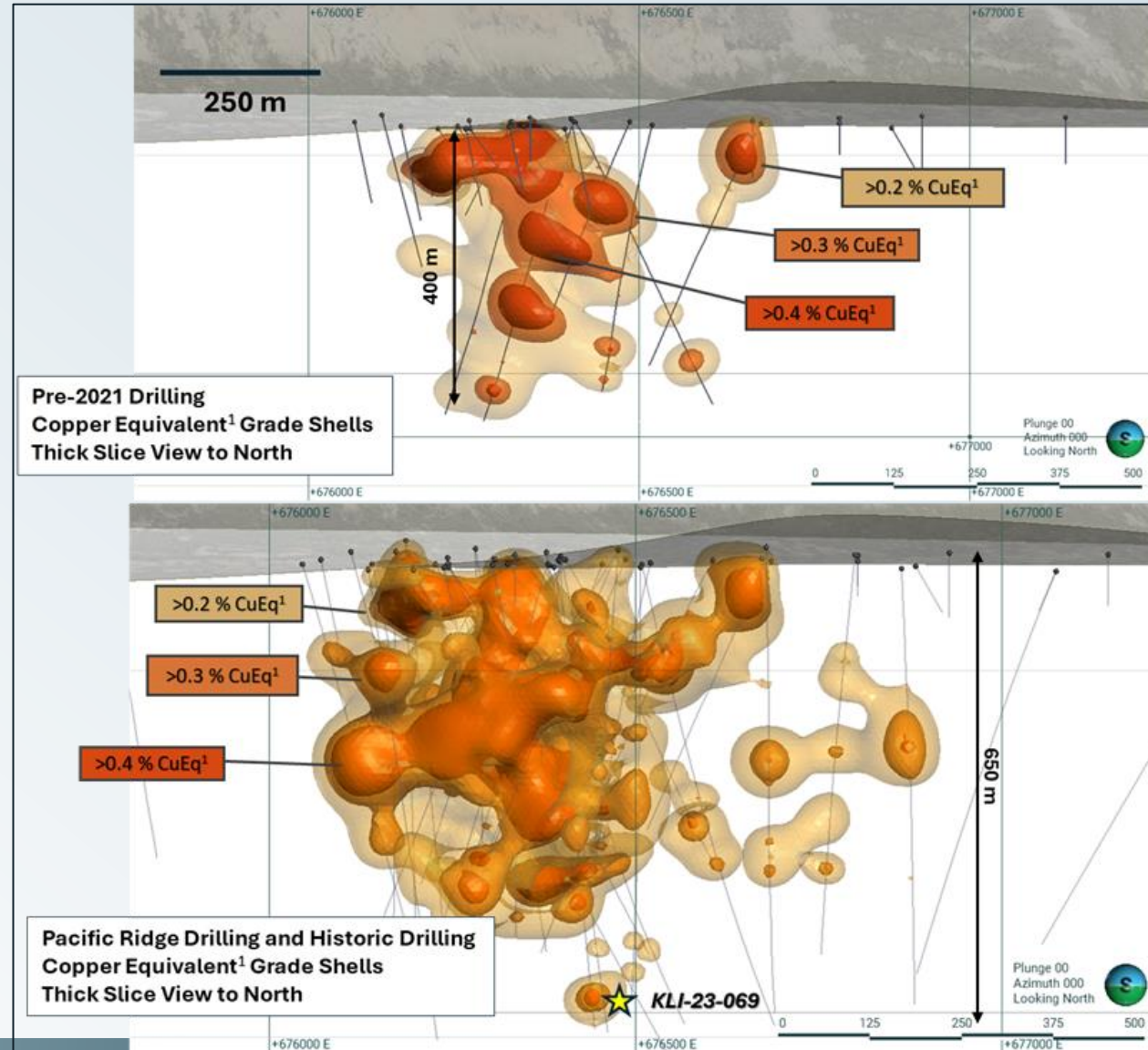
Pre-2021, the mineralized extents measured ~350m E-W x ~150m N-S x ~400m vertical depth.



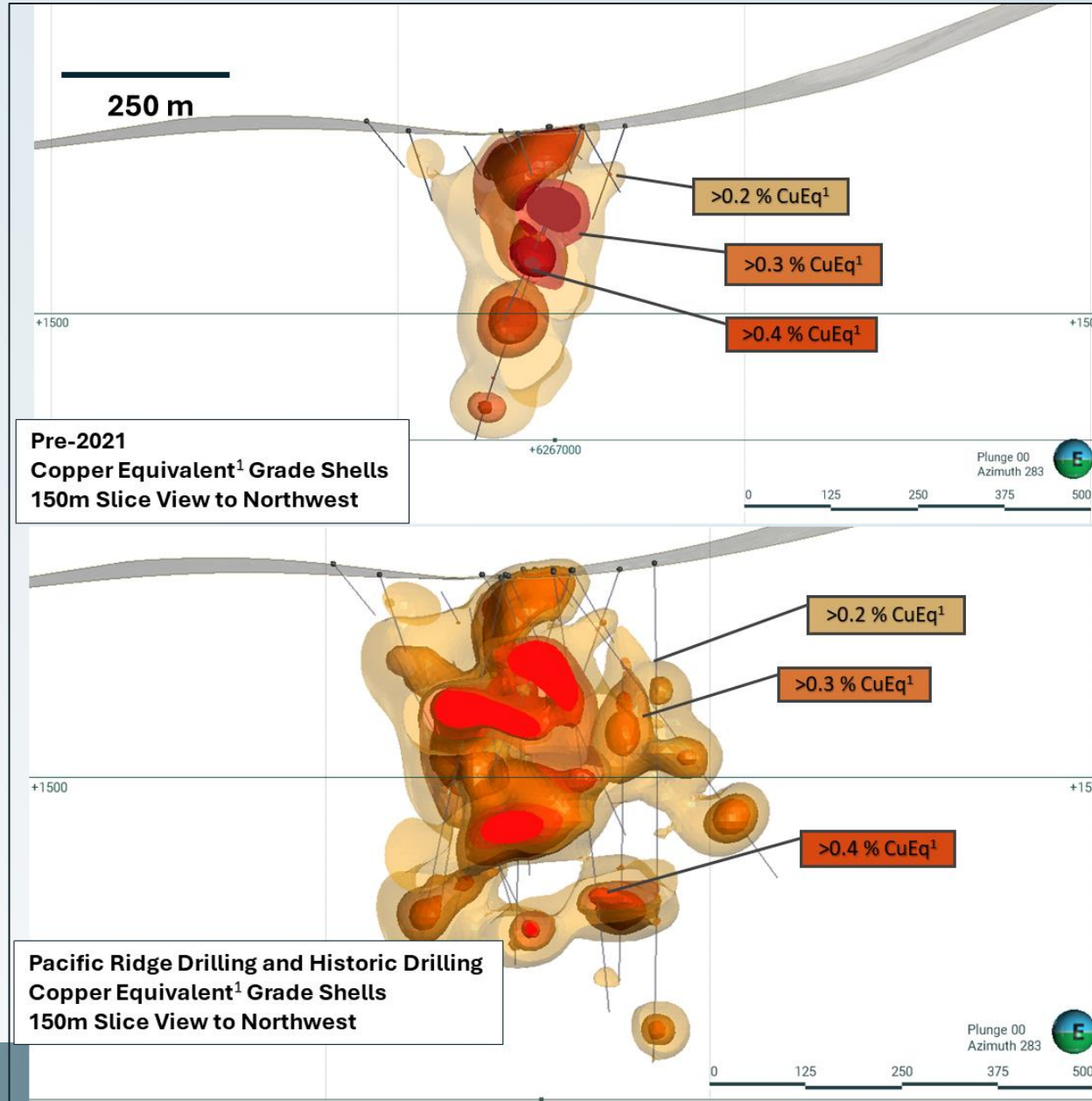
Growing KMZ



Growing KMZ



Growing KMZ



Veining and Mineralization

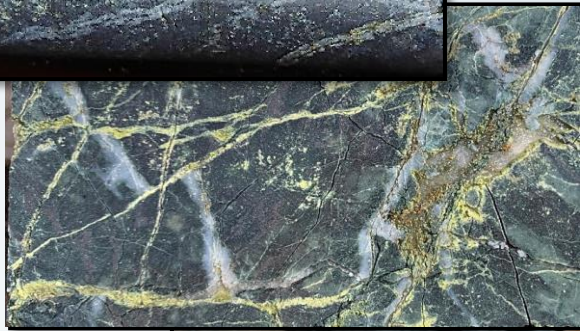
* Cu mineralization
* Au mineralization



- QZ-MT banded quartz-magnetite veins
- early, barren
 - potassic alteration stage (prograde)



- ** QZ-MT-CPY ± BN veins
- crosscutting MT hydrothermal breccia and diorite
 - potassic alteration stage (prograde)



- ** CPY-PY and CPY-BN with EPI and/or ANH
- epidote and/or anhydrite with Cu-sulfide
 - calc-sodic ± chlorite-sericite alteration stage



- * PY ± CPY veins with bleached halos
- chlorite-sericite to sericitic alteration stage (retrograde)

Lithologies

* Cu mineralization
* Au mineralization



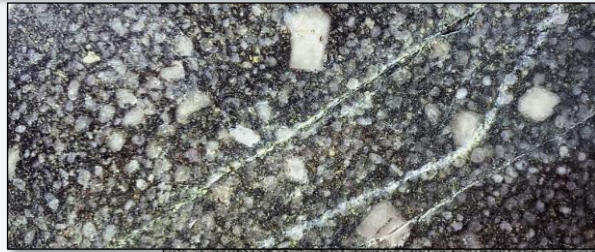
** Andesitic-volcaniclastic host rock
- Kliyul Creek volcanic sandstone/breccia (Takla Gp.)



** Plagioclase quartz diorite porphyry
- Intermineral stage



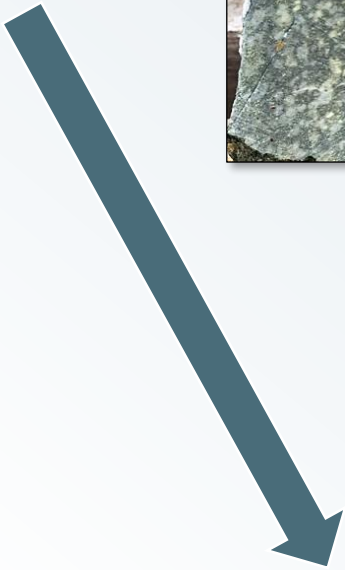
Plagioclase feldspar quartz porphyry
- Late-mineral stage



Plagioclase-megacrystic quartz porphyry
- Late-mineral stage



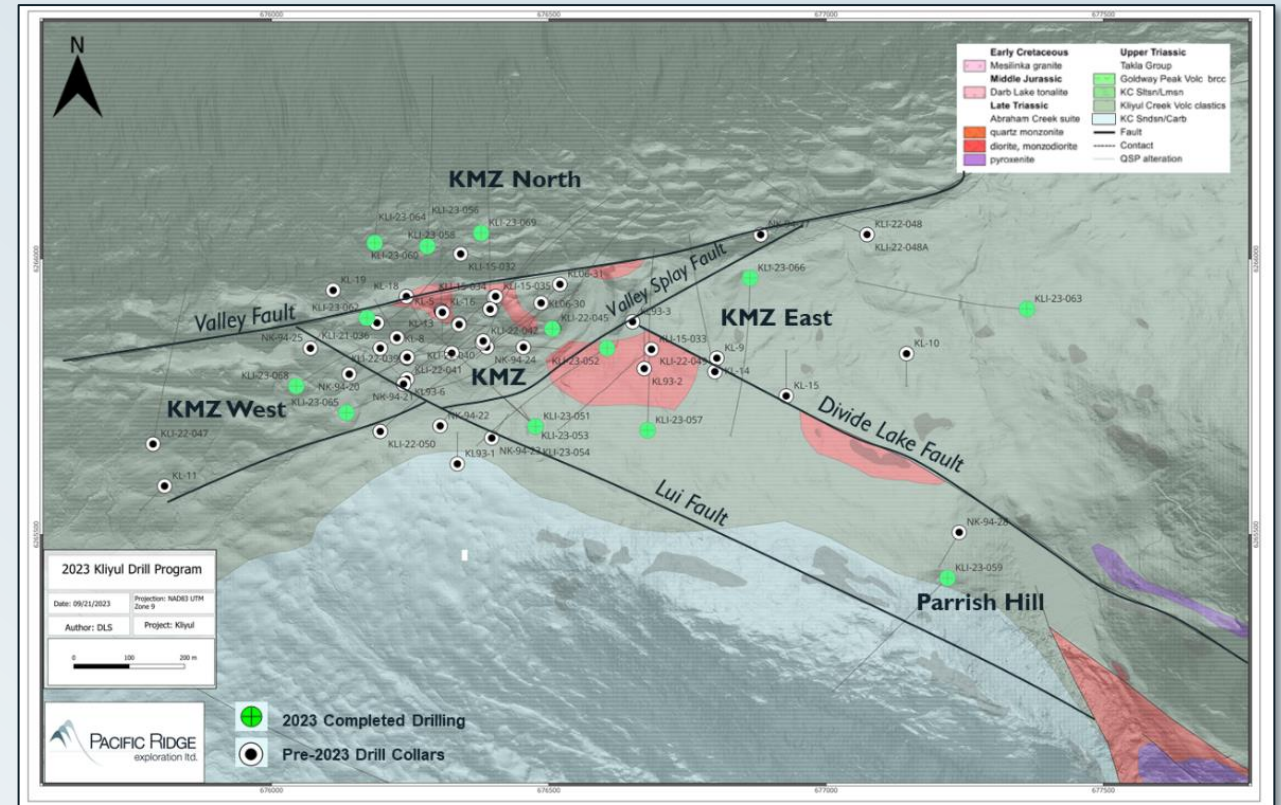
Hornblende plagioclase porphyry
- Late mineral stage



2023 Drill Program

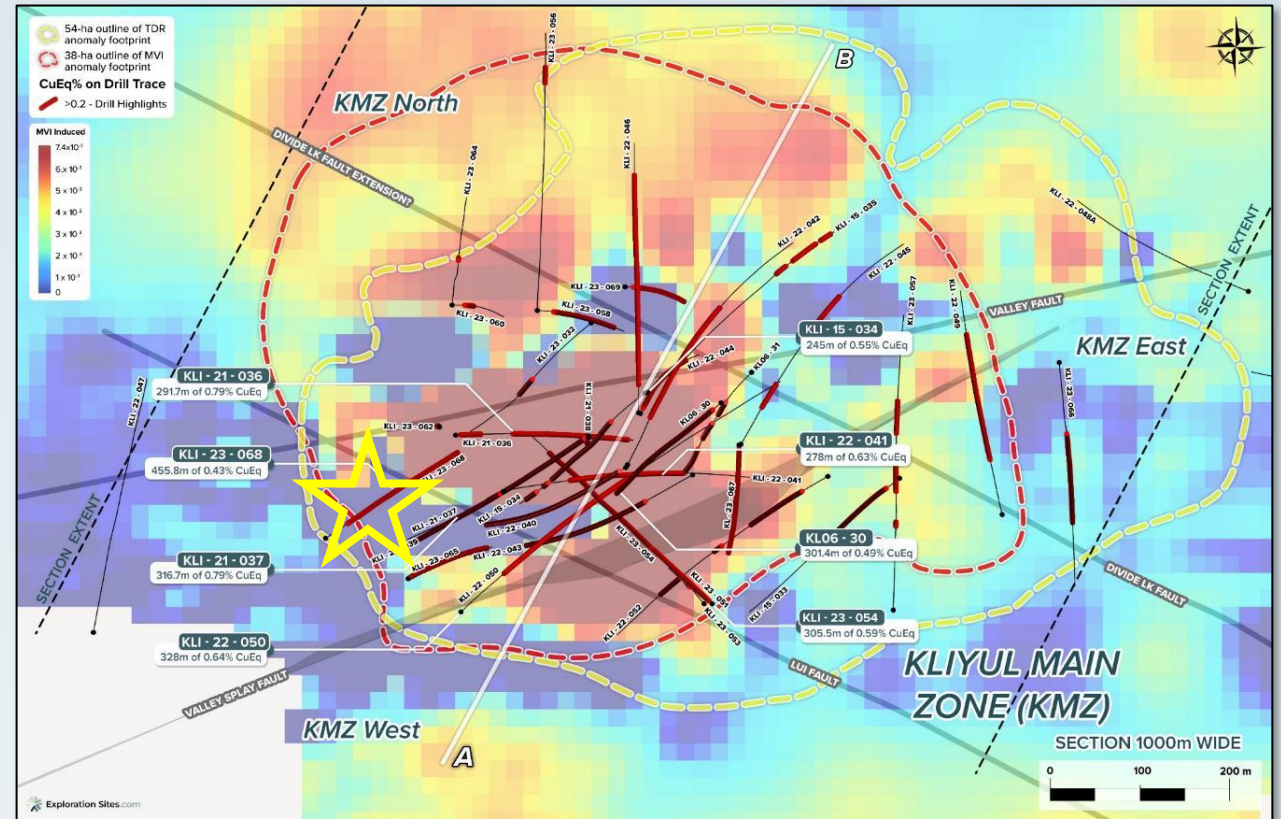
Expansion drill program:

- 10,284 m in 19 holes, **the largest ever drill program at Kliyul.**
- Tested an area measuring **1300m E-W x 600m N-S x 650m vertical.**
- **Increased the mineralized extents** to ~760 m E-W x ~600 m N-S x ~650 m vertical depth; pre-2021 the mineralized extents measured ~350m E-W x ~150m N-S x ~400m vertical depth.
- **Continued to intersect higher-grade intervals** outside of KMZ central block and into adjacent fault blocks (KMZ West, KMZ East, and KMZ North).



2023 Drill Program

- KLI-23-068 returned **110.0 m of 0.97% CuEq*** or **1.44 g/t AuEq**** within 455.8 m of 0.43% CuEq* or 0.63 g/t AuEq** .
- **Best interval of the 2023 drill program.**
- Drill testing KMZ West to greater depth **will be a priority of future drill programs.**



*CuEq = ((Cu%) x \$Cu x 22.0462) + (Au(g/t) x AuR/CuR x \$Au x 0.032151) + (Ag(g/t) x AgR/CuR x \$Ag x 0.032151) / (\$Cu x 22.0462).

**AuEq = ((Au(g/t) x \$Au x 0.032151) + ((Cu%) x CuR/AuR x \$Cu x 22.0462) + (Ag(g/t) x AgR/CuR x \$Ag x 0.032151)) / (\$Au x 0.032151).

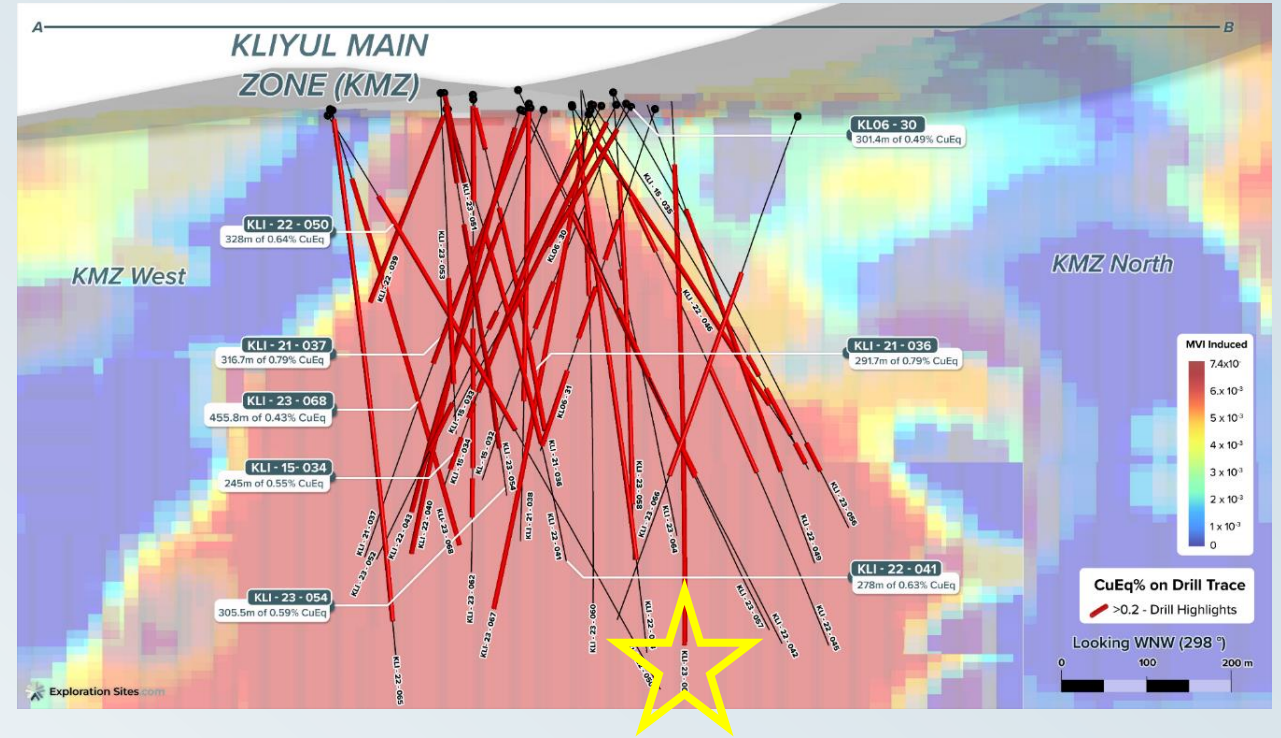
Commodity prices: \$Cu = US\$3.25/lb, \$Au = US\$1,800/oz., and Ag = US\$20.00/oz.

There has been no metallurgical testing on Kliyul mineralization. The Company estimates copper recoveries (CuR) of 84%, gold recoveries (AuR) of 70%, and silver recoveries (AgR) of 65% based on the average recoveries from Kemess Underground, Mount Milligan, and Red Chris.)

Factors: 22.0462 = Cu% to lbs per tonne, 0.032151 = Au g/t to troy oz per tonne, and 0.032151 = Ag g/t to troy oz per tonne.

2023 Drill Program

- The last hole of the 2023 drill program, KLI-23-069, returned **45.0 m of 0.58% CuEq* or 0.86 g/t AuEq**** within 570.0m of 0.27% CuEq* or 0.40 g/t AuEq**.
- Provides a down-plunge **vector for a higher-grade porphyry centre at KMZ** to the northeast.
- The 45 m interval, at 584 m downhole depth, is the **deepest mineralized interval ever encountered at Kliyul.**
- Drill testing this area to greater depth **will be a priority of future drill programs.**



Thick section (1km)

*CuEq = ((Cu%) x \$Cu x 22.0462) + (Au(g/t) x AuR/CuR x \$Au x 0.032151) + (Ag(g/t) x AgR/CuR x \$Ag x 0.032151) / (\$Cu x 22.0462).

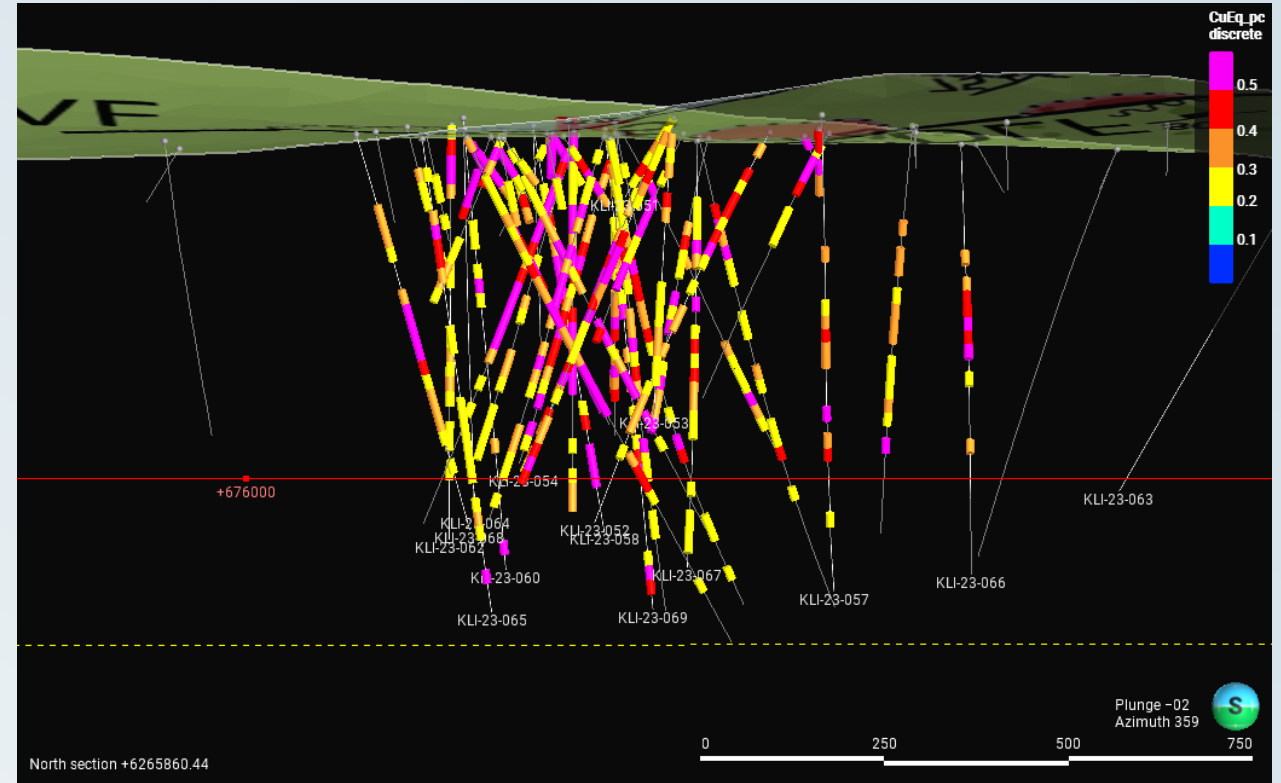
**AuEq = ((Au(g/t) x \$Au x 0.032151) + ((Cu%) x CuR/AuR x \$Cu x 22.0462) + (Ag(g/t) x AgR/CuR x \$Ag x 0.032151)) / (\$Au x 0.032151).

Commodity prices: \$Cu = US\$3.25/lb, \$Au = US\$1,800/oz., and Ag = US\$20.00/oz.

There has been no metallurgical testing on Kliyul mineralization. The Company estimates copper recoveries (CuR) of 84%, gold recoveries (AuR) of 70%, and silver recoveries (AgR) of 65% based on the average recoveries from Kemess Underground, Mount Milligan, and Red Chris.)

Factors: 22.0462 = Cu% to lbs per tonne, 0.032151 = Au g/t to troy oz per tonne, and 0.032151 = Ag g/t to troy oz per tonne.

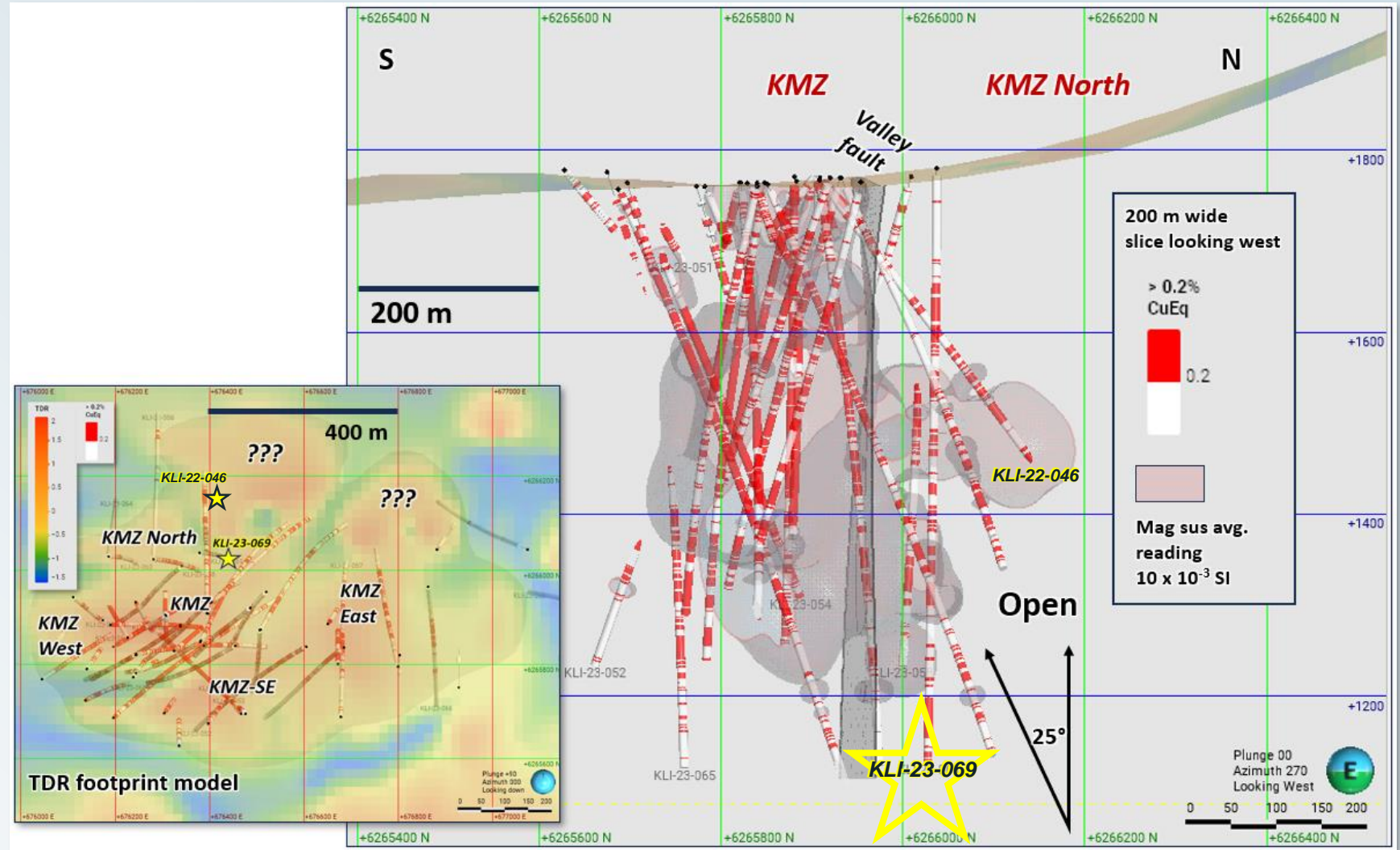
Kliyul Drilling 3D View CuEq(%)



Thick slice looking north (CuEq >0.20%)

Kliyul Conceptual Target Model: NNE plunging

- Steeply plunging porphyry core extending at depth to centre of tilt-derivative (TDR) footprint.
- TDR magnetic high anomalies to the NNE and NE have not been adequately drill tested.
- KMZ-22-046 drilled the western margin of northern mag anomaly and returned 59 m at 0.89% CuEq and 1.22 g/t AuEq within 169 m at 0.55% CuEq and 0.75 g/t AuEq
- There is a 300 m wide gap in drilling between KLI-23-069 and KLI-22-046 intercepts representing only the southwestern part of the untested northern anomaly

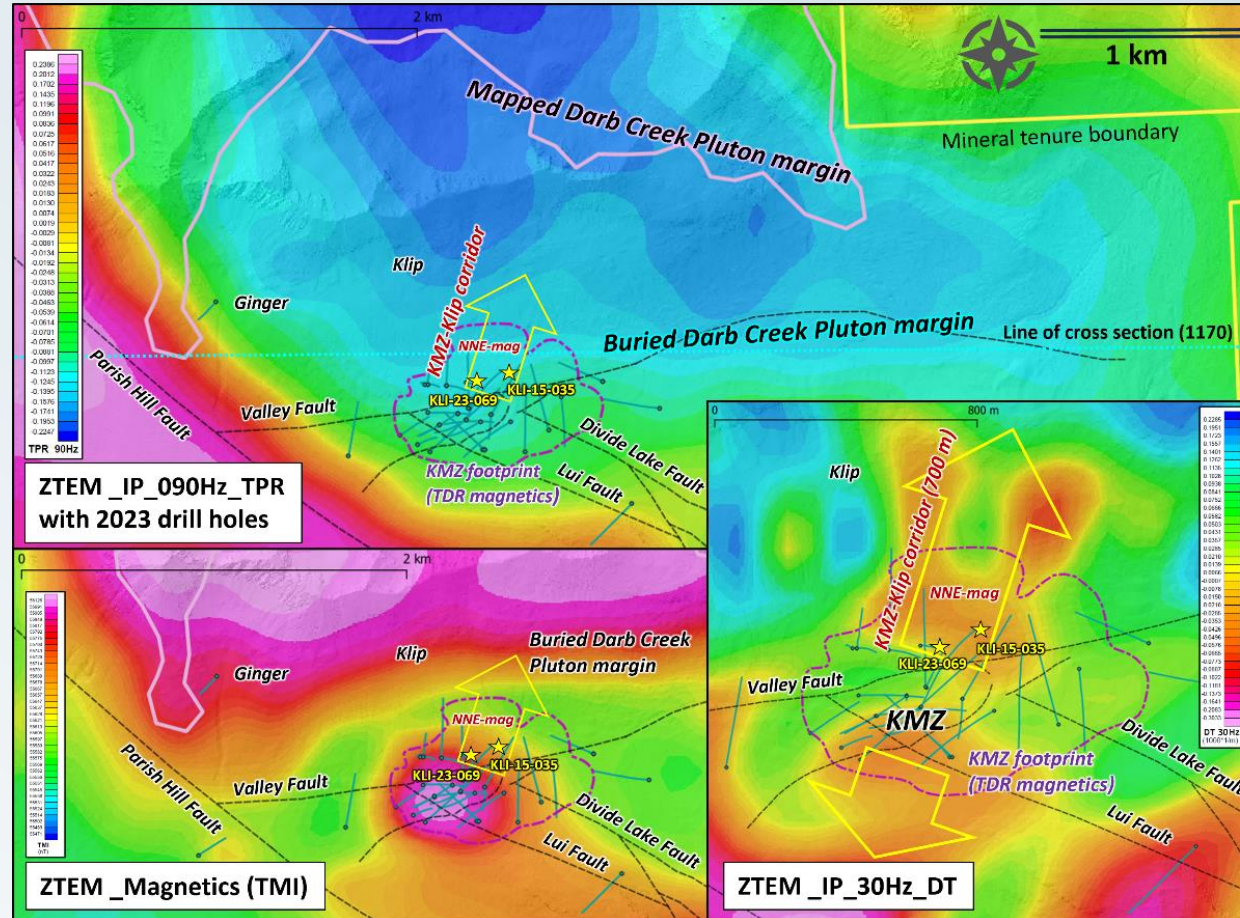


2023 Learnings

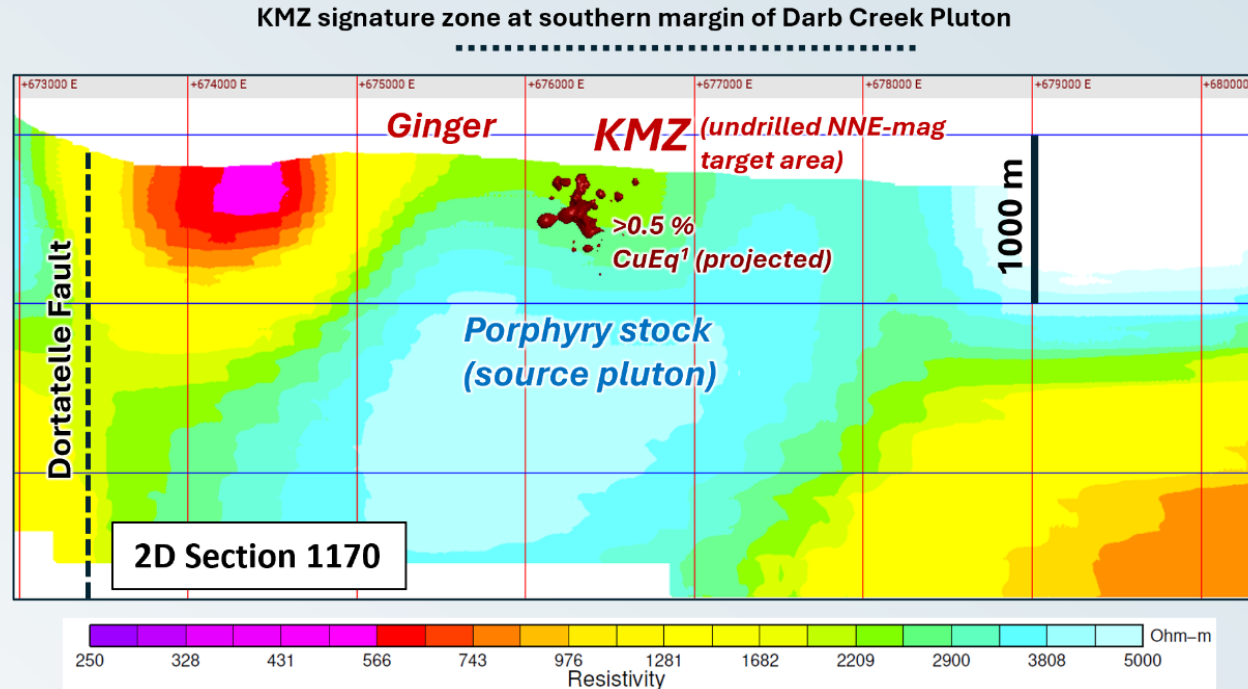
- The KMZ porphyry system is not confined to central KMZ fault block, but extends into adjacent fault blocks (KMZ West, KMZ East, and KMZ North).
- The KMZ system has a moderate westward component of tilt (E-W section), and a steep northward component of tilt (N-S section).
- The porphyry system has three symmetrically zoned alteration-mineralization signatures over a 1,300 m E-W cross section; including a potassic core zone (~250 m diameter), a chlorite-sericite peripheral zone (up to 450 m outward from potassic core), and a distal D-vein zone (up to 1 km from the potassic core).
- Mineralization is controlled by quartz diorite porphyry (QDP) dykes with related early- to intermediate-stage vein stockwork; the QDP dykes constitute a dyke field which shows relationship to early-stage structural corridors
- Final drilling in 2023 intersected a 172 m sequence of intermediate and felsic intrusive rocks with mineralized QDP in KMZ North suggestive of a pluton top or cupola zone that underlies the KMZ dyke field (the historical KMZ lies south of this, north of KLI-23-069 is largely untested).
- The porphyry system is currently classified as Low-K calc-alkalic type like those in Philippines (Baguio and Mankayan districts), including the Far Southeast deposit (891.7 Mt at 0.50% Cu, 0.70 g/t Au; containing 19.8 Moz Au, 9,921 Mlb Cu - Gold Fields website 2024), although there are High-K intrusive rocks in the local environment as well.



2024 ZTEM Results



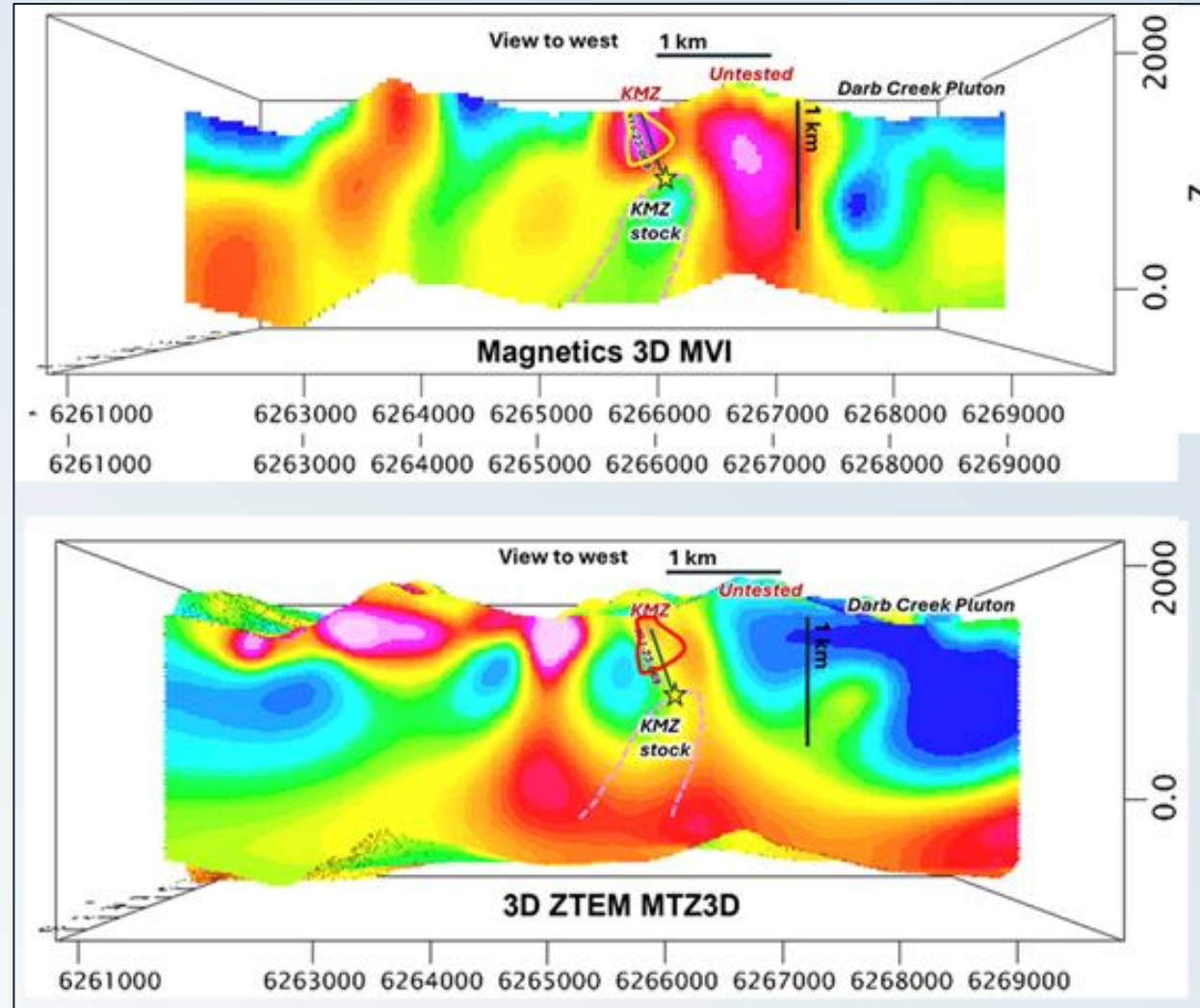
Kliyul 2D Resistivity



East-West Section 1170 Across the Undrilled NNE Magnetic Anomaly of the KMZ Porphyry Footprint. View to the North.

Kliyul 3D Resistivity and $>0.2\%$ CuEq

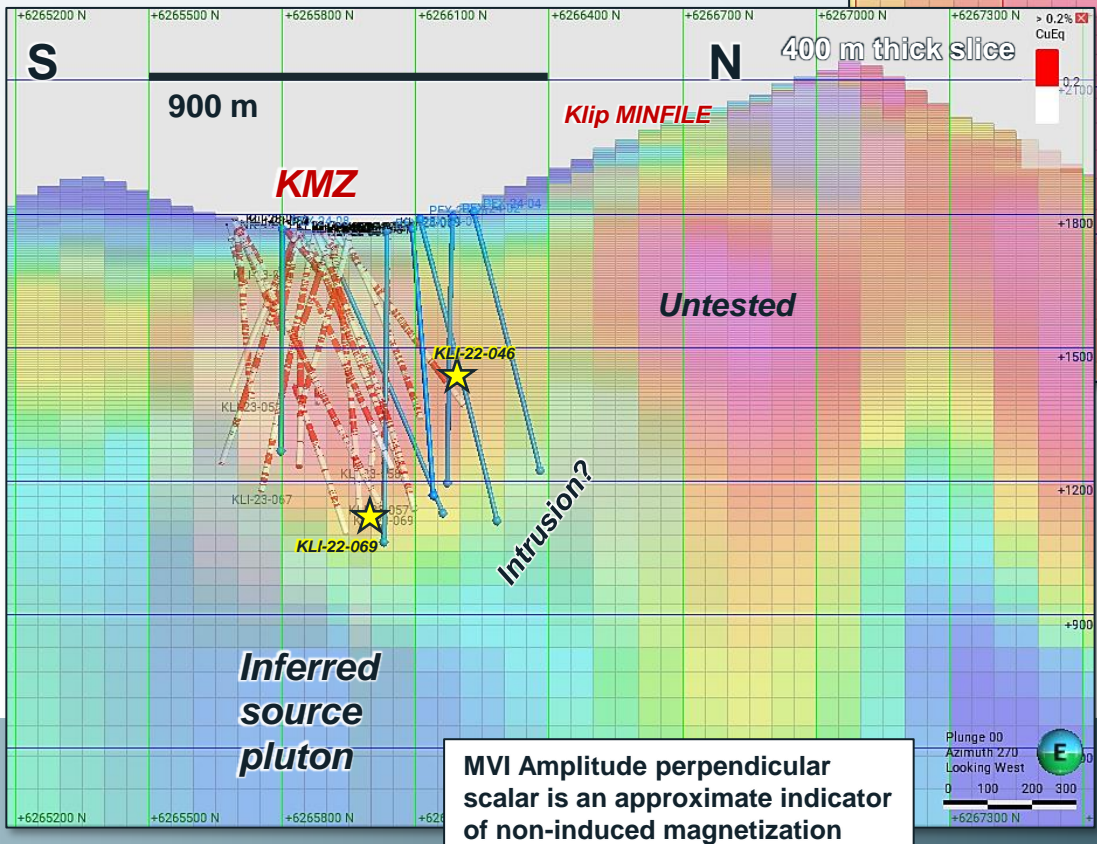
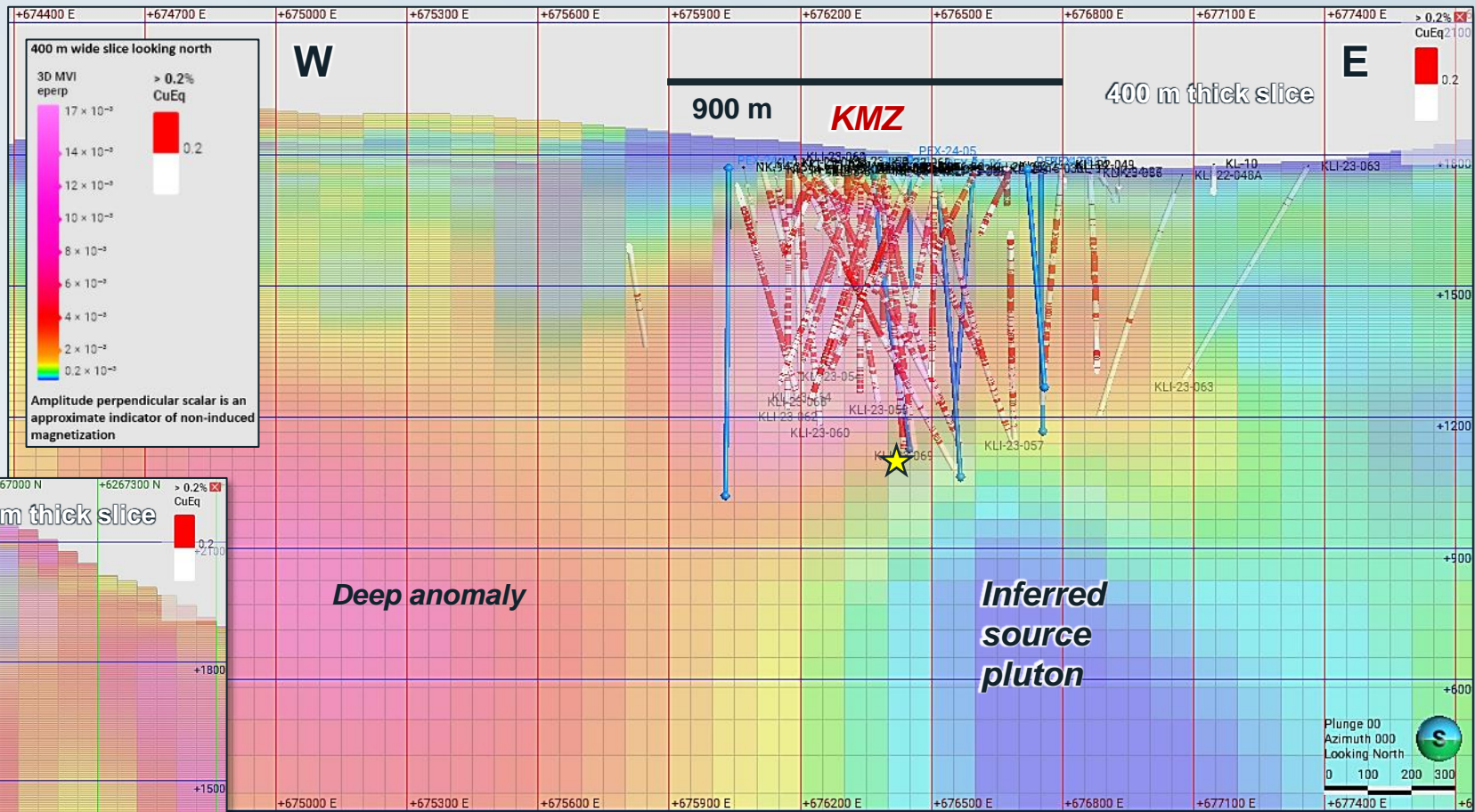
N-S Section Across the Undrilled NNE Magnetic Anomaly of the KMZ Porphyry Footprint. View to the West.



Future Drilling

The Big Picture

Continue defining the KMZ porphyry system as it relates to inferred underlying pluton source.



Blue sky potential

Will the definition of the KMZ porphyry system lead to another porphyry system? Or another component of a larger system?

Is the KMZ porphyry centre just one of a cluster at Kliyul?

Conclusion

Pacific Ridge is **one of B.C.'s leading copper-gold exploration companies** and maintains excellent relationships with local First Nations.

The Company **owns or controls five copper-gold porphyry projects** in B.C.

The Kliyul copper-gold project, located in the prolific Quesnel Terrane in northcentral B.C., is Pacific Ridge's flagship project:

- Pacific Ridge **has spent more than CAD\$14.0M** on exploration at Kliyul since optioning it from Centerra Gold in 2020 and issued 17.0M shares (valued at CAD\$4.0M) to acquire 100% ownership in 2023.
- Pacific Ridge has significantly expanded the mineralized extents of the Kliyul Main Zone ("KMZ") since 2021, and it **remains open in every direction.**
- 523.5 line-km of ZTEM in 2024, results pending, to support **targeting at depth and evaluate property-scale potential.**
- Claims in good standing until 2034 – **no expenditures required until 2034.**

